

# PERRIS ELEMENTARY SCHOOL DISTRICT

## 2014 General Obligation Bond Authorization

### Measure C



**Citizen's Oversight  
Committee Report**

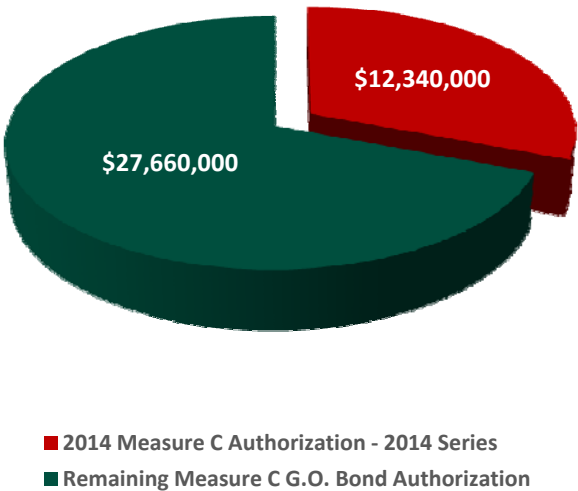
**September 28, 2015**

# 2014 GENERAL OBLIGATION BOND ELECTION

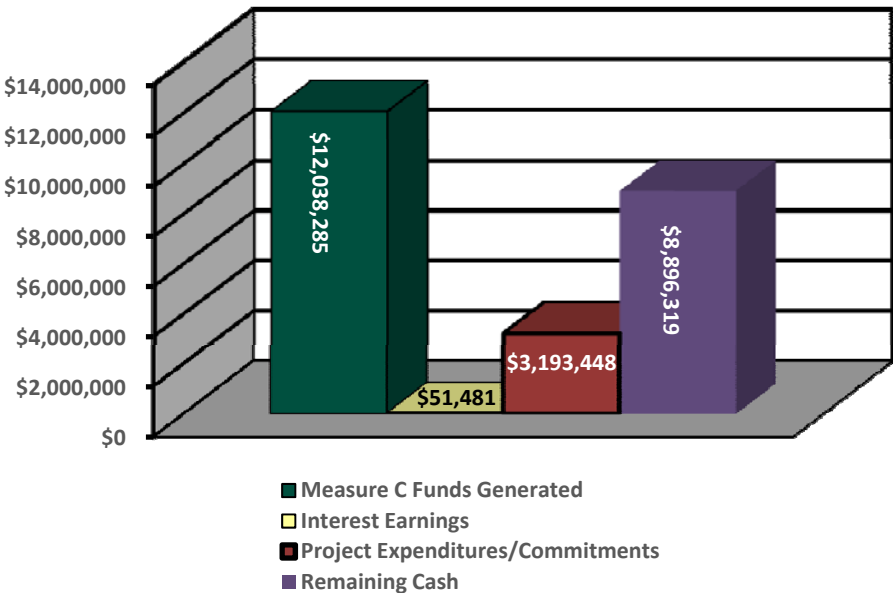
## 2014 Measure C Overview

On June 3, 2014, the voters of the Perris Elementary School District (the “District”) authorized **Measure C** under the Proposition 39 statutes. Measure C authorized the issuance of \$40 million in General Obligation Bonds (the “Bonds”). The net proceeds of the Bonds are intended to be used for relieving overcrowding by constructing new schools and facilities, improving technology, renovating existing school facilities, improving health and safety conditions in existing educational facilities, improving access for students and parents with disabilities, upgrading fire safety and security systems, replacing portable classrooms with permanent construction, and improving walkways, curbs, gutters, turn-arounds, crosswalks, playgrounds, and parking facilities.

\$40,000,000 Measure C Breakdown



Measure C GO Bonds Balances



# 2014 GENERAL OBLIGATION BOND ELECTION

## *New Clearwater Elementary School from Measure C G.O. Bonds*

---

### School Profile:

The new Clearwater Elementary School site is located on the corner of Nuevo Road and Murrieta Road in the north east area of the Perris Elementary School District. The 14.4 acre site is located in a residential neighborhood and was used as agricultural land before the District acquired it. The school will serve kindergarten through 6th grade and will have an enrollment of 750 students.

Clearwater Elementary School will be the most collaboration-inspired campus the District has ever built and will serve as a springboard for future District projects. Highlights of the school include group collaboration spaces, connected indoor/outdoor teaching spaces and large amounts of shade and covered spaces to enable utilization of outdoor space for our Southern California climate. There is a Flex Lab area in the heart of the campus which connects directly to a sunken outdoor classroom via a large sliding glass door, which effectively doubles the size of the learning environment.

### Current Status:

The groundbreaking ceremony for Clearwater Elementary School took place on Friday, May 29th, 2015. Clearwater will be the District's 9th elementary school. Based on "green" concepts of architecture and design, Clearwater has already been recognized by the American Institute of Architects by receiving the 2014 Merit Award. The School is currently in construction.



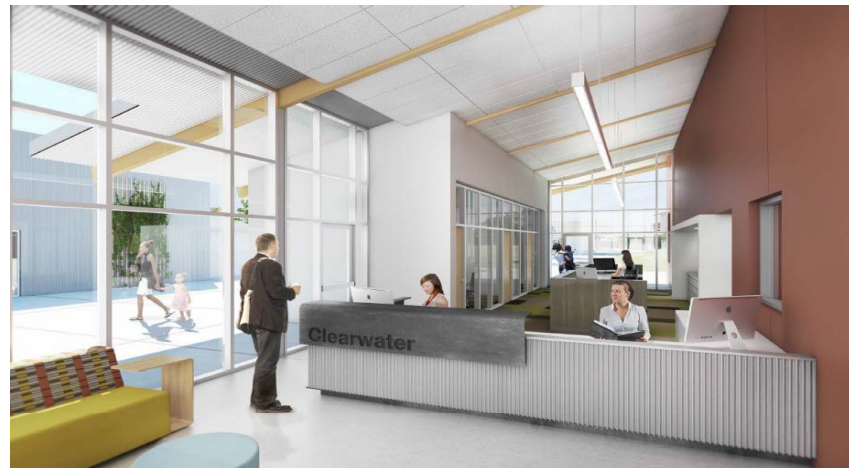
## ***Clearwater Elementary School Site Map and Architect Drawings***





# 2014 GENERAL OBLIGATION BOND ELECTION

## *Clearwater Elementary School Architect Drawings*



# 2014 GENERAL OBLIGATION BOND ELECTION

## *Measure C*

---

# 2014 GENERAL OBLIGATION BOND ELECTION

## *Expenditure Backup*



# Encumbrance Report

## Perris Elementary School District - G.O. Bonds

*Measure C, Measure C - 21:7735 (Clearwater New Construction), Measure C - 21:9010 (Other Restricted Local), Measure C - 21:9021 (CFD 91-1)*

VENDOR	ENCUMBRANCE	EXPENDITURE	BALANCE	
<b>135 - Clearwater Elementary School</b>				
A2Z Sign Company	\$804.20	(\$804.20)	\$0.00	Vendor Total
California Geological Survey	\$3,600.00	(\$3,600.00)	\$0.00	Vendor Total
City Of Perris	\$67,050.45	(\$38,626.45)	\$28,424.00	Vendor Total
Division Of State Architect	\$152,250.00	(\$152,250.00)	\$0.00	Vendor Total
Eastern Municpal Water District	\$744.59	(\$744.59)	\$0.00	Vendor Total
Epic Engineers	\$23,000.00	(\$7,700.00)	\$15,300.00	Vendor Total
Geotek, Inc	\$305,591.00	(\$75,656.00)	\$229,935.00	Vendor Total
Hmc Architects School Advisors	\$1,646,389.03	(\$1,080,125.24)	\$566,263.79	Vendor Total
Keenan & Associates	\$112,112.00	(\$112,112.00)	\$0.00	Vendor Total
Lsa Associates Inc	\$5,286.93	(\$5,286.93)	\$0.00	Vendor Total
Neff Construction Inc	\$24,163,447.00	(\$1,691,986.12)	\$22,471,460.88	Vendor Total
Nixon Peabody Llp	\$3,390.00	(\$3,390.00)	\$0.00	Vendor Total
Press Enterprise	\$287.00	(\$287.00)	\$0.00	Vendor Total
Riverside County Flood Control Dist	\$2,000.00	(\$2,000.00)	\$0.00	Vendor Total
State Water Resources Control Board	\$1,070.00	(\$1,070.00)	\$0.00	Vendor Total
Susan W. Case Inc.	\$350.00	(\$350.00)	\$0.00	Vendor Total
Tyr Inc	\$204,249.00	(\$9,000.00)	\$195,249.00	Vendor Total
	\$26,691,621.20	(\$3,184,988.53)	\$23,506,632.67	Project Totals for 135 - Clearwater Elementary School

# Encumbrance Report

## Perris Elementary School District - G.O. Bonds

*Measure C, Measure C - 21:7735 (Clearwater New Construction), Measure C - 21:9010 (Other Restricted Local), Measure C - 21:9021 (CFD 91-1)*

VENDOR	ENCUMBRANCE	EXPENDITURE	BALANCE	
<b>500 - Perris School District Office</b>				
Registrar Of Voters	\$8,459.00	(\$8,459.00)	\$0.00	Vendor Total
	\$8,459.00	(\$8,459.00)	\$0.00	Project Totals for 500 - Perris School District Office



# Encumbrance Report

## Perris Elementary School District - G.O. Bonds

*Measure C, Measure C - 21:7735 (Clearwater New Construction), Measure C - 21:9010 (Other Restricted Local), Measure C - 21:9021 (CFD 91-1)*

VENDOR	ENCUMBRANCE	EXPENDITURE	BALANCE	
	\$26,700,080.20	(\$3,193,447.53)	\$23,506,632.67	District Grand Totals for Perris Elementary School District - G.O. Bonds (for selected data)